

## VIDEO PRODUCTION

Switcher - GVG-Kalypso HD (4) M/E  
w/ 90 inputs  
6 Transform Engines  
DoubleTake Split M/E  
DVE - Abekas MC Dual Twin Channel HD  
(1) Chyron Duet SD/HD HyperX3  
Leitch Cards with Clip Players  
Lyric Pro Software

## VIDEOTAPE

(2) EVS HD XT2 LSM 6 Ch Server  
(1) EVS HD XT2 LSM 4 Ch Server  
(1) EVS HD XS 4 Ch Spotbox  
(1) EVS X-File  
(1) Sony HDCamSR SRW-5500 VTR  
(1) Sony M2000 SD Deck  
(1) Sony HDW 1800 HDCAM deck  
(3) DVD Recorder/Player  
*Additional VTR s/EVS Available Wired for 10 VTR and 7 EVS*

## SYSTEM EQUIPMENT

GVG Routing Switcher  
w/ 94x64 HD SDI Video  
128x96 SD SDI Video  
160x128 AES Audio  
128 In / 24 Out Virtual Monitor System  
(16) Up/Cross Converters  
(10) Broadcast Down Converters  
(2) Tandberg HD Encoders/Modulators  
(1) Tandberg HD Decoder  
(2) Tandberg Satellite Modulators

## CAMERAS

(10) Sony HDC-1500 Cameras  
1080i/720p/24p Switchable  
fiber based with Triax Adaptors  
(4) Hand Held Camera  
(6) Hard Cameras (HHs in Expanders)  
(1) Clock Camera  
(2) POV Cameras  
*Additional Cameras available on Request Wired for 14*

## LENSES

(2) Canon XJ86x9.5 Zoom Lenses  
(4) Canon XJ72x9.5 Zoom Lenses  
w/ servo zoom controls ad manual kits  
built in heaters  
(4) Canon J21 HH Lenses  
w/ semi Servo Kits  
(2) Canon HJ11x4.7 ENG lenses  
w/ semi Servo Kits

## INTERCOM / COMMUNICATIONS

RTS Adam Intercom 104x104 matrix  
w/ 16 IFB Channels  
14 Camera ISO  
18 KP-32 Master Stations  
16 BP-325 Beltpacks  
20 Assignable 2-W drops  
(5) Telephone Hybrids  
Motorola Radio System  
(2) Base station (RTS Interfaced)  
(6) Radios

## AUDIO CONSOLE

Calrec Sigma - 64 Faders  
w/ Bluefin - 360 Equiv Mono Ch  
96 Stereo AES/96 Analog Inputs  
48 Multi Tracks/20 Auxes  
8 Stereo Subgroups  
4 5.1/Stereo/Mono masters  
Surround Spill & Delay Modules  
2 Madi 32 Channel Paths

## AUDIO EQUIPMENT

(2) Digicart/E w/ Zip Drive  
(1) CD Player/Recorder  
(1) ENCO 8 Ch. DAD Player/Encoder  
(2) DBX 160A Mono Compressors  
(2) DBX 1066 Stereo Compressors  
(2) DBX DDP Digital Processor  
Dolby E DP571 Encoder  
Dolby E DP572 Decoder  
Dolby DP570 Audio Tool  
Dolby DP563 Surround Enc.  
Dolby LM100 Loudness Mtr

## MICROPHONES

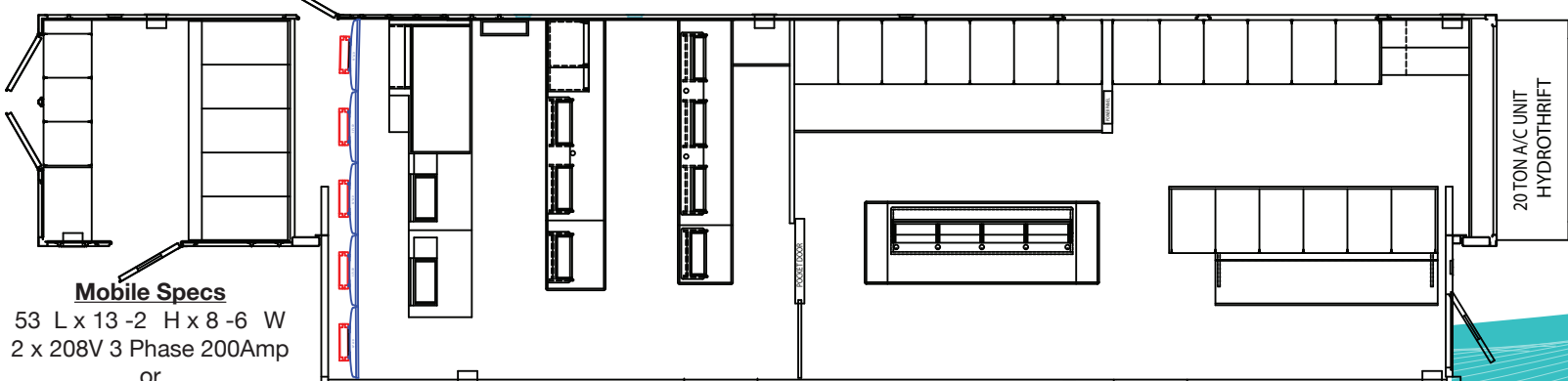
(6) Senn Com Headsets HMD25-1  
(10) Sony ECM 77B Lavs  
(8) Audio-Technica AT-815B  
(4) Senn. MKH416  
(2) Senn. MKH 70 shotguns  
(2) Senn. ME 66  
(10) Electrovoice EV-635A/B  
(2) Electrovoice RE-50B

### AUDIO

### PRODUCTION

### VTR

### VIDEO/TX



#### Mobile Specs

53 L x 13 -2 H x 8 -6 W  
2 x 208V 3 Phase 200Amp  
or  
1 x 208V 3-Phase 300 Amp

41 Foot Expando - 5' Deep



# SPIRIT HD

innovative • flexible • adaptable

info@domeproductions.com

www.domeproductions.com

1 Blue Jays Way, Suite 3400

Toronto, ON Canada M5V 1J3

t: 416.341.2001

f: 416.341.2136

12:30:00:10

Output	Truck Name	Show Name
1	PGM	
2	CLEAN	
3	SWR PVW	
11	TRUNK 1	
12	TRUNK 2	
13	TRUNK 3	
14	TRUNK 4	
15	TRUNK 5	
16	TRUNK 6	
23	AUX 6	
24	AUX 7	

Note: The virtual monitors can be set up independantly in many different ways with as many feeds in as needed. This is only a suggestion.

Input	Truck Name	Show Name	Input	Truck Name	Show Name	Input	Truck Name	Show Name	Input	Truck Name	Show Name	Input	Truck Name	Show Name
1	CCU 1		19	EXT 5		37	VTR 5		55	Server 1		73		
2	CCU 2		20	EXT 6		38	VTR 6		56	Server 2		74		
3	CCU 3		21	EXT 7		39	VTR 7		57	DVE		75		
4	CCU 4		22	EXT 8		40	VTR 8		58	CG 1-1		76	DVE Key	
5	CCU 5		23	EXT 9		41	VTR 9		59	CG 1-2		77	CG 1 AIR KY	
6	CCU 6		24	EXT 10		42	VTR 10		60	CG 2-1		78	CG 1 PVW KY	
7	CCU 7		25	EXT 11		43	EVS 1-1		61	CG 2-2		79	CG 2 AIR KY	
8	CCU 8		26	EXT 12		44	EVS 1-2		62	TEST		80	CG 2 PVW KY	
9	CCU 9		27	EXT 13		45	EVS 1-3		63			81		
10	CCU 10		28	EXT 14		46	EVS 1-4		64			82		
11	CCU 11		29	EXT 15		47	EVS 2-1		65			83		
12	CCU 12		30	EXT 16		48	EVS 2-2		66			84		
13	CCU 13		31	X75 #1		49	EVS 3-1		67			85		
14	CCU 14		32	X75 #2		50	EVS 3-2		68			86		
15	EXT 1		33	VTR 1		51	EVS 4-1		69			87		
16	EXT 2		34	VTR 2		52	EVS 4-2		70			88		
17	EXT 3		35	VTR 3		53	EVS 4-3		71			89		
18	EXT 4		36	VTR 4		54	EVS 4-4		72			90		

Event: \_\_\_\_\_

Date: \_\_\_\_\_